

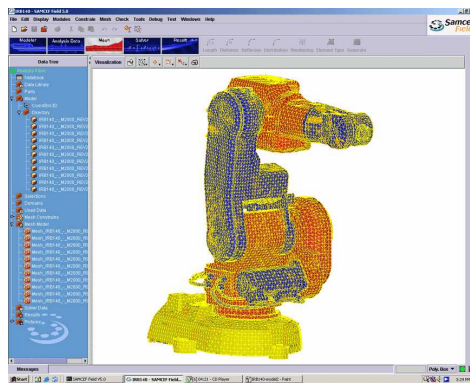


SAMTECH s.a. is a European specialist in Computer Aided Engineering (CAE) software for Finite Element Analysis (FEA) and Multi-Disciplinary Optimization (MDO).

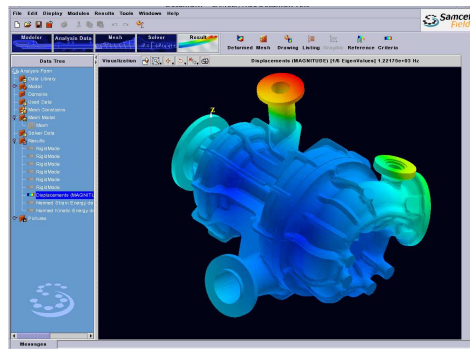


Engineering software for Structures and Mechanisms analysis

SAMTECH develops and markets the general-purpose Finite Element Analysis code SAMCEF, the Multi-Disciplinary Optimization platform BOSS quattro, the Open CAE Design Framework CAESAM, the multi-physics solver OOFELIE as well as Professional solutions such as S4WT (SAMCEF for Wind Turbines), S4R (SAMCEF for Rotors), S4PL&S (SAMCEF for Power Lines and Substations) resulting from the integration of specific and customized skills with these application oriented software.



SAMTECH is present in Belgium, France, Germany, Italy, Spain, UK and China for technical support, sales and engineering services.



The company relies also on a network of technically qualified distributors in other markets all over the world.

GDTECH s.a. (Global Design Technology) is the engineering subsidiary of SAMTECH, providing customized solutions in engineering such as consultancy, intellectual services and turnkey projects.

OPEN ENGINEERING is the last subsidiary of SAMTECH. This company is in charge of the development of advanced Multi-Physics software solutions.

Contact Person

Mr Didier Granville
Chief Marketing Officer

email: didier.granville@samcef.com

tel: +32 4 3616969

fax: +32 4 3616980

<http://www.samcef.com>

Rue des Chasseurs-Ardennais 8
B-4031 Angleur (Liège)
Belgium